

SeNd Technology Ltd Quick Start Guide

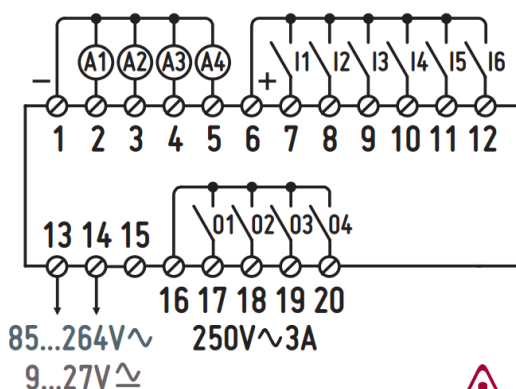
AVIOR WiFi, 2G & 4G IoT Telemetry



Online guides available at
www.sendtech.info/avior



- 01 Negative
- 02 Analog Input 1
- 03 Analog Input 2
- 04 Analog Input 3
- 05 Analog Input 4
- 06 Positive 3,3VDC
- 07 Digital Input 1
- 08 Digital Input 2
- 09 Digital Input 3
- 10 Digital Input 4
- 11 Digital Input 5
- 12 Digital Input 6
- 13 Power Supply
- 14 Power Supply
- 15 —
- 16 Relays common
- 17 Relay output 1
- 18 Relay output 2
- 19 Relay output 3
- 20 Relay output 4



!
 LOW VOLTAGE POWER SUPPLY, INPUTS AND LINK PORT MUST MEET THE DEMANDS PLACED ON SELV (SAFETY EXTREMELY LOW VOLTAGE) CIRCUITS ACCORDING TO EN / IEC 62368

Quick Check List (local configuration)

- Avior Unit!
- Antenna is connected
- Active SIM card is inserted in base
- External power connected
- USB to serial programming cable connected
- Download AviorSuite software at <https://www.sendtech.info/avior>

Local Configuration:

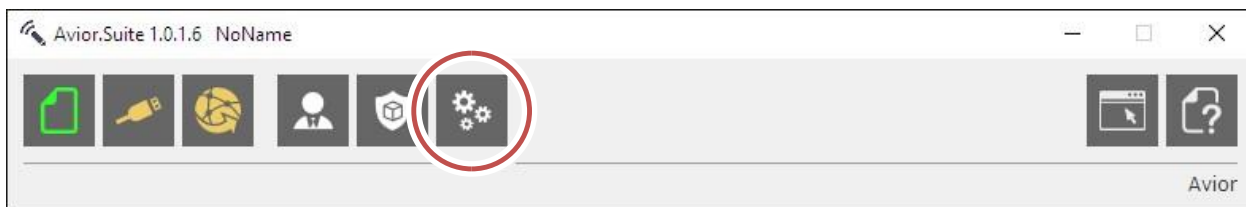
Download the latest AviorSuite software from <https://www.sendtech.info/avior>
 Unzip the folder and click on the AviorSuite.exe application – If you get a request to update to the latest version – update!



If you have a GSM unit insert a SIM card into the base of the Avior and connect an antenna, power, and the USB programming cable to your PC. Check the hardware guide that came in the box for more details and a wiring diagram. The AviorSuite software should recognise the attached Avior and assigned COM port. Click on the USB icon to connect to the Avior unit. Enter the password (default 0000).

Note: When you have set up either Wifi or the mobile APN details you will be able to configure and monitor your Avior remotely.

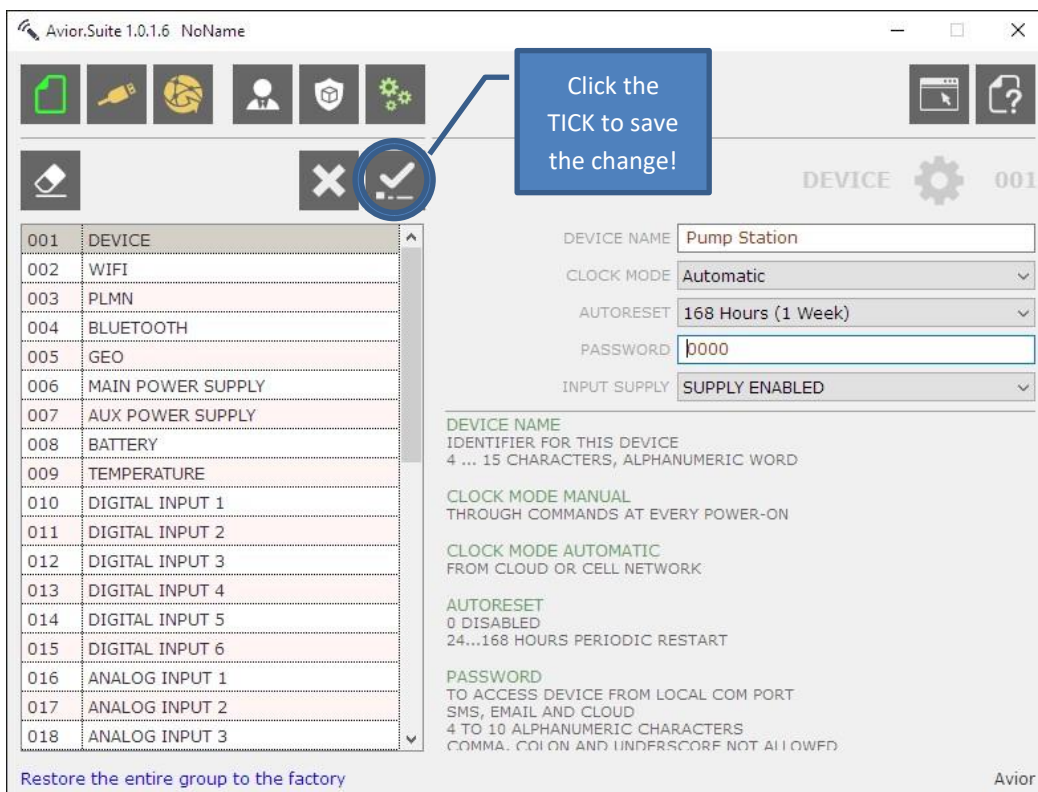
Initial Configuration (Housekeeping) – CONFIGURATION



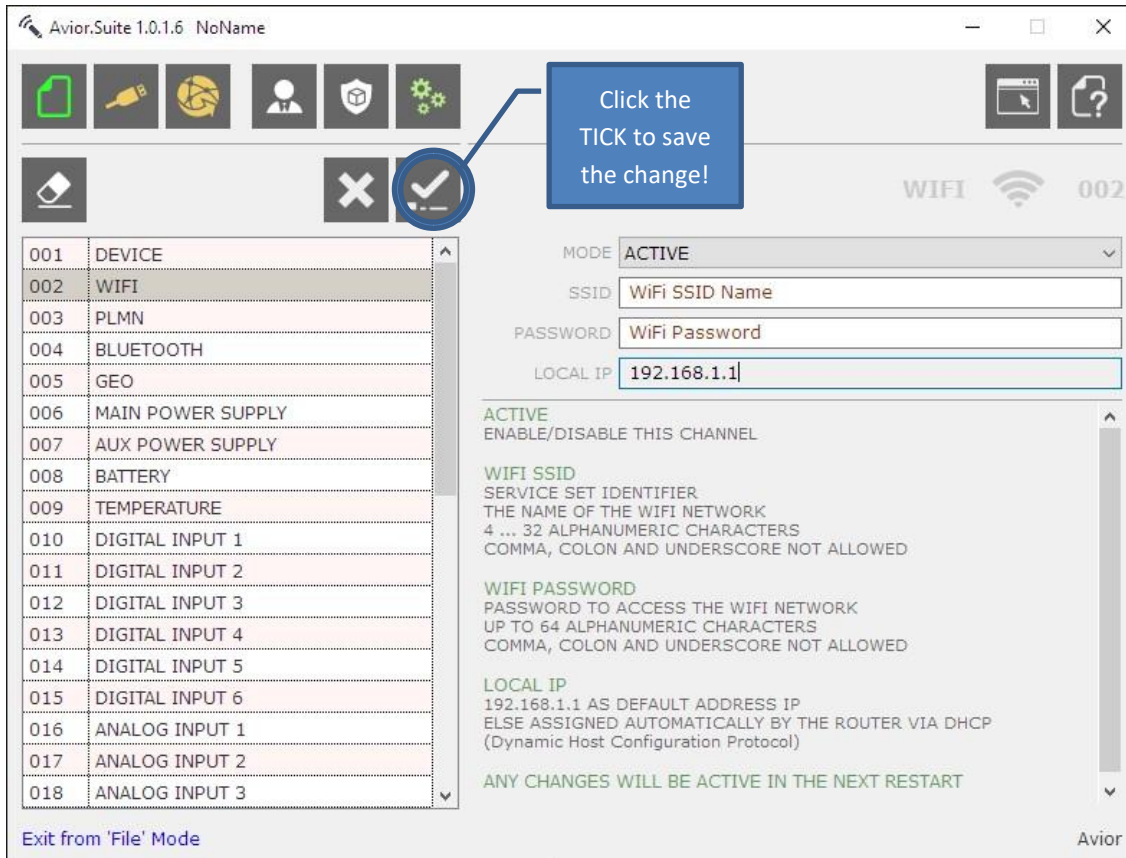
The following stages set up the device name and network connection details:

1. **Device** – Here you can give the device a name to fit the installation of application eg “Pump Station”

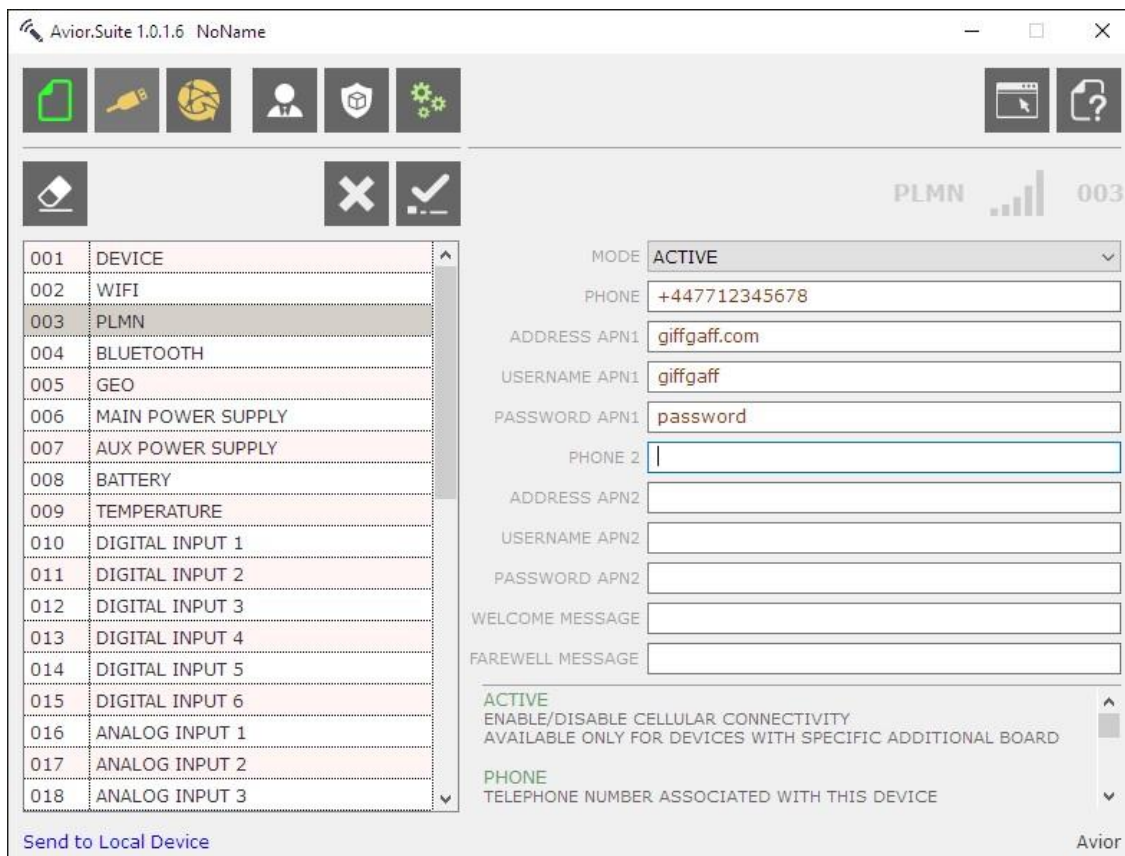
Note: When you edit and make changes remember to click on the tick on the second row to save the change in the connected device.



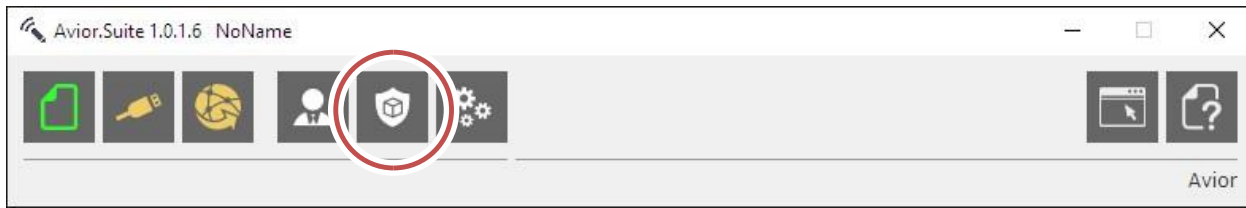
2. **WiFi** – Enter the local WiFi network name (SSID) and password



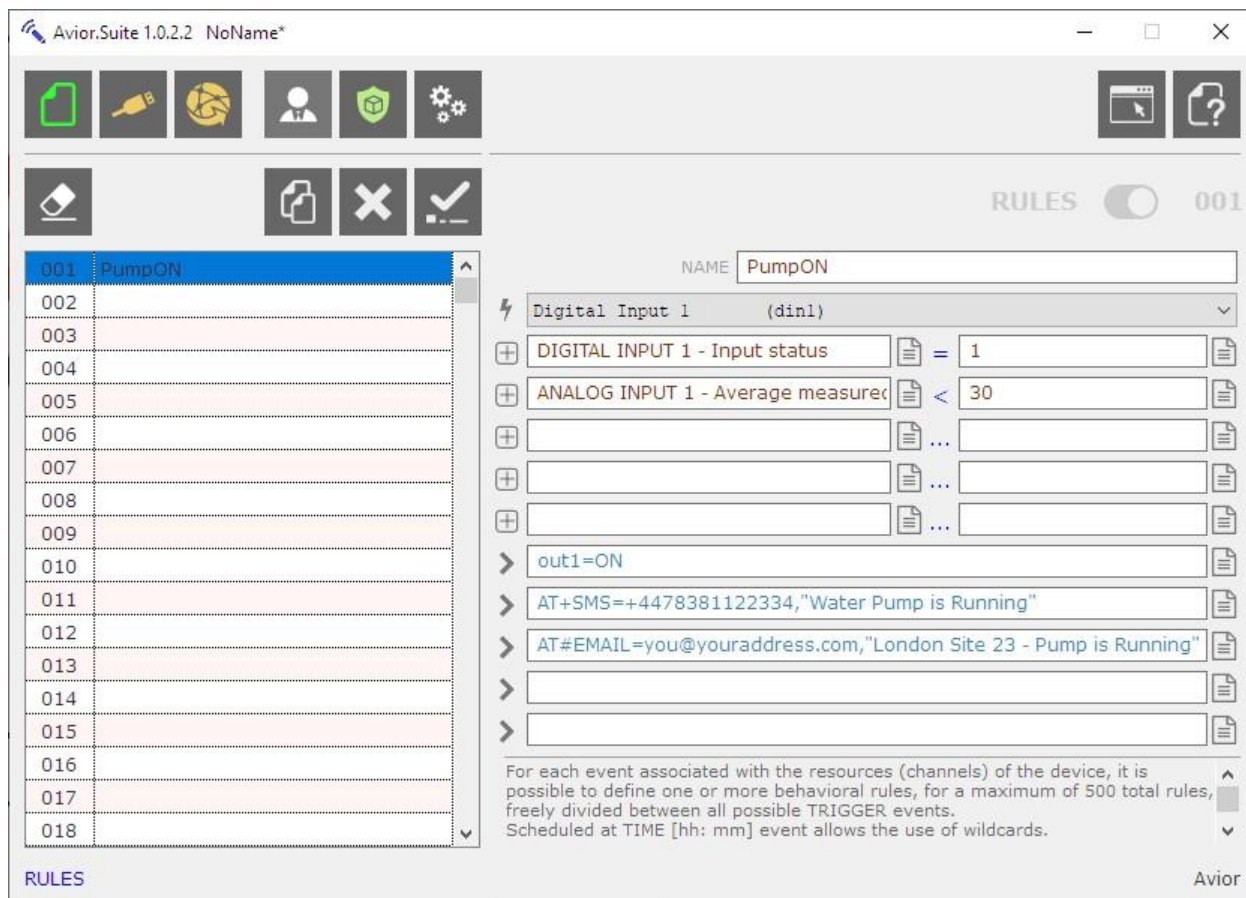
3. **PLMN** – This is the mobile/cell network for the SIM you are using – Make ACTIVE then enter the mobile number of the SIM card (international format) and the APN, username and password required for the mobile/cell network to make a data connection. If you are unsure of these just Google your network and APN details.



Initial Programming (Sending Alert Messages) – RULES



RULES – Rules consist of a TRIGGER (eg Digital Input 1) and can be combined with up to 5 CONDITIONS (eg Input 1 value = 1 – i.e. it has closed) and a subsequent ACTION (eg send a SMS message and an email – up to 5 ACTIONS can be triggered per RULE).



In this example the TRIGGER is Digital Input 1 and the CONDITIONS are a) It is activated (=1 closed) AND b) the 2nd CONDITION is that Analog Input1 is less that 30degC (attached NTC temperature probe) then the ACTIONS are performed to turn on Output1 AND send an SMS AND an EMAIL to confirm the pump is running (all in the one RULE).

You can select these triggers, conditions and actions from the drop-down menu icon at the end of each row. The = and < signs are operands and these are selected by clicking on the three ... blue dots in the condition line

There are many options here. Please look at the text at the bottom of the configuration page for context-based usage or hover over the condition or action for syntax usage. Also click on the HELP icon (top right) for full documentation

We also have video guides for set up on YouTube which can be found on the Avior page of our website.

Initial Programming – USERS

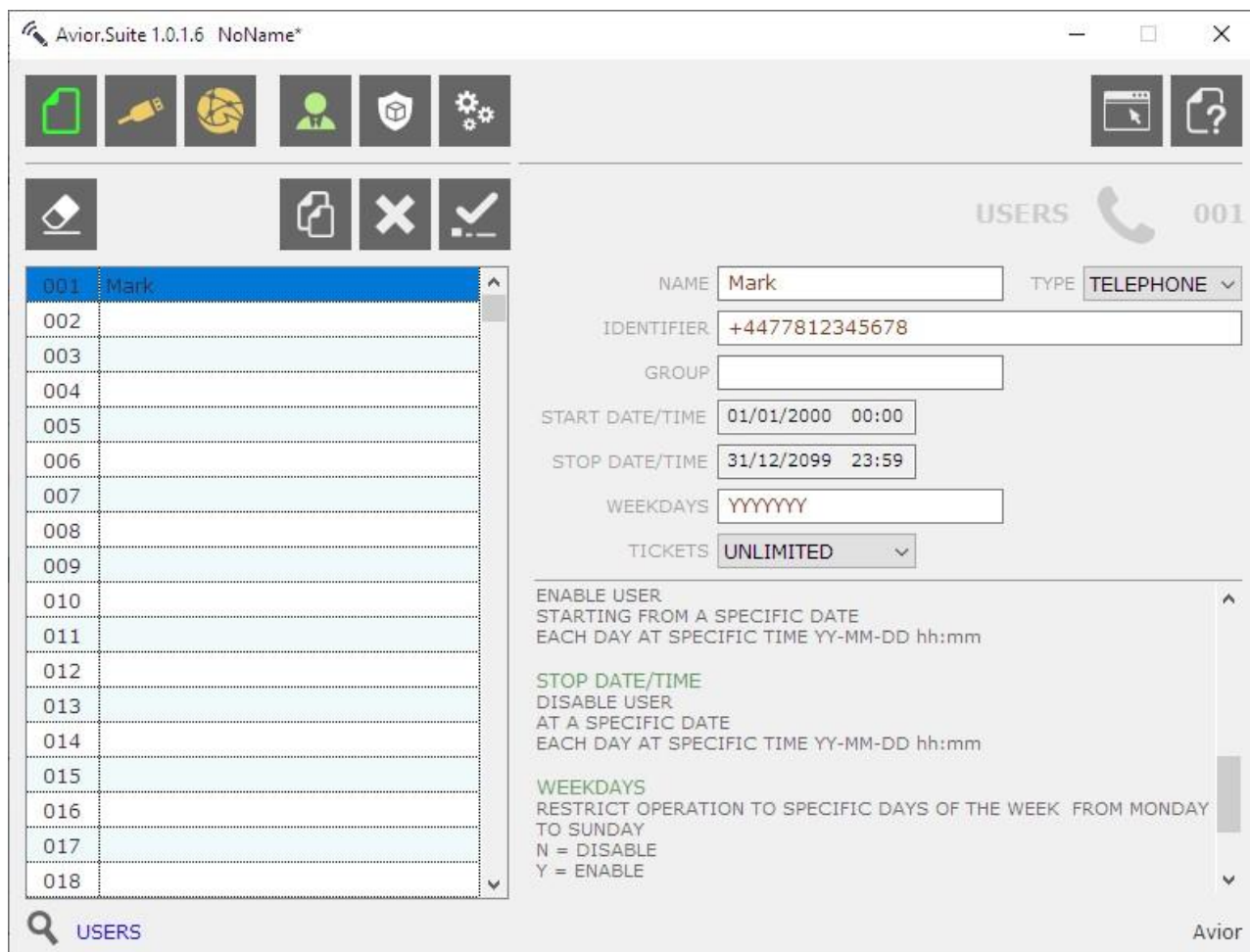


USERS are people that are authorised to send commands to the remote Avior unit to change values or process ACTIONS.

Example:

A USER would like to turn on output relay 1 when they send a SMS word “start” to the Avior.

Step 1: Set the user name and their authorised mobile number



Users can be identified by their phone number or email, and we can also set other Avior units as users to allow communication between units either over their own Avior LAN or remotely over the mobile network.

Step 2: Set a RULE that when a TRIGGER (incoming SMS) contains the CONDITION (the word “start”) the ACTION turn relay output 1 ON is performed. In the example below a SMS is also sent confirming the action.

The screenshot shows the Avior Suite 1.0.1.6 interface. On the left is a list of rules numbered 001 to 018. The main area displays the configuration for rule 'StartPump'. The trigger is 'SMS from user' with the condition 'PLMN - Last received SMS - Text of m' containing the word 'start'. The actions include 'out1=ON' and 'AT+SMS=\$N23, "The pump has started"'. A note at the bottom explains that up to 500 rules can be defined for various trigger events.

RULES – Rules consist of a TRIGGER (eg SMS from USER) and can be combined with up to 5 CONDITIONS (eg Last SMS received contains the word “start”) and a subsequent ACTION (eg Turn Output 1 ON and send a SMS to the last sender \$N23) – up to 5 ACTIONS can be triggered per RULE.

This QuickStart is just a very basic overview of what the Avior can do to get you up and running.

Monitoring and configuration can also be done remotely via the Avior Website or using the optional embedded webserver on SD-Card via Wi-Fi. Please contact SeNdTech for help and advice with configuration and your application.

Please feel free to contact us if you have any questions or need any help with your application:

Email: sales@sendtech.co.uk

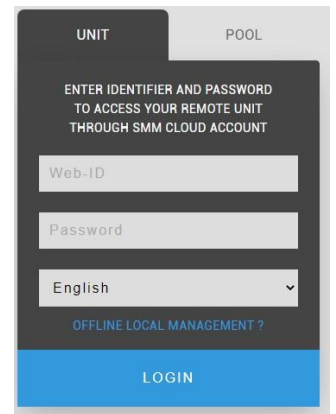
Phone: +44 (0)1488 762 763

MyAvior – Web Portal for monitoring and configuration

If your Avior is connected to the internet via Wi-Fi or a mobile data connection you will be able to access it through the Avior web portal at <https://avior.webadmin.mobi/>

The Web-ID for your unit is shown above the Device Name in Avior Suite in the Configuration section. You can also request this if you have an active SIM in the Avior by sending the following SMS: 0000 at#rm=D13 (This is useful if your Avior is installed remotely and you need the Wed-ID!)

Default Password is 0000



You can then monitor, control, and configure in a similar way to the instructions for local cable connection configuration.

Need more help?



Please remember to check out our YouTube **“How to Guides”** from the Avior page of www.sendtech.co.uk.

Guides include:

- **Avior Hardware - Inputs and Outputs and Wiring.**
- **Avior "How To" Guide - Initial Config & Rules to send SMS & email alert messages.**
- **Avior "How To" Guide - Rules for Power Fail Alerts.**
- **Avior "How To" Guide - Using Groups for Multiple recipients.**